

MONTHLY MEMBERSHIP PROGRESS REPORT

LOCATION INDIA

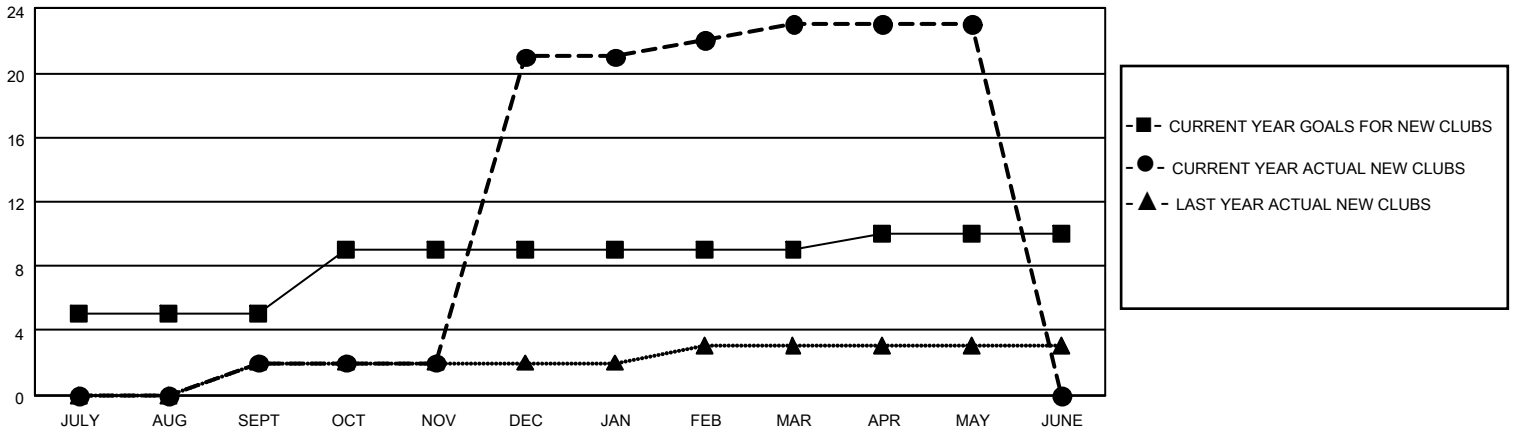
District 321A3

Results as of: 5/31/2021

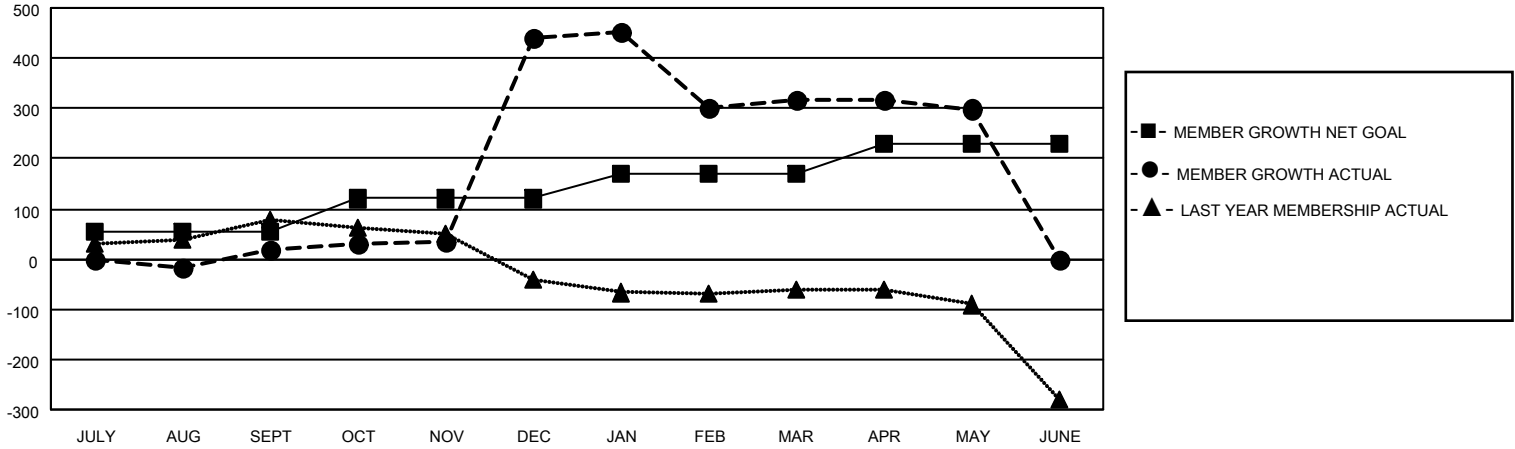
Clubs			
RESULTS FOR 2020-2021			
QUARTER	NEW CLUB GOAL	NEW CLUBS	DROPPED CLUBS
JULY/AUG/SEPT	5	2	0
OCT/NOV/DEC	4	19	0
JAN/FEB/MAR	0	2	11
APR/MAY/JUNE	1	0	0

Members			
RESULTS FOR 2020-2021			
QUARTER	MEMBER GROWTH NET GOAL	MEMBER GROWTH ACTUAL	DROPPED MEMBERS ACTUAL (including transfers)
JULY/AUG/SEPT	55	72	47
OCT/NOV/DEC	65	500	74
JAN/FEB/MAR	50	83	200
APR/MAY/JUNE	60	4	20

GOALS AND ACTUAL NEW CLUBS CUMULATIVE



GOALS AND ACTUAL MEMBERS CUMULATIVE



DROPPED CLUBS: 11	
<u>DROPPED MEMBERS</u>	
DECEASED	10
CLUB CANCELLED	168
OTHER	163
TOTAL	341

53 CLUBS OF 116 ADDED 1 OR MORE NEW MEMBERS

[CLICK HERE FOR CUMULATIVE MEMBERSHIP DATA](#)

<u>GENDER DISTRIBUTION</u>	
MALE	1,698 (77.78%)
FEMALE	485 (22.22%)

TOTAL FAMILY UNIT MEMBERS	948
FAMILY MEMBERS PAYING HALF DUES	519